



WL-100 High Intensity Aviation Obstruction Light

Instruction Manual

Rev: 1.1V

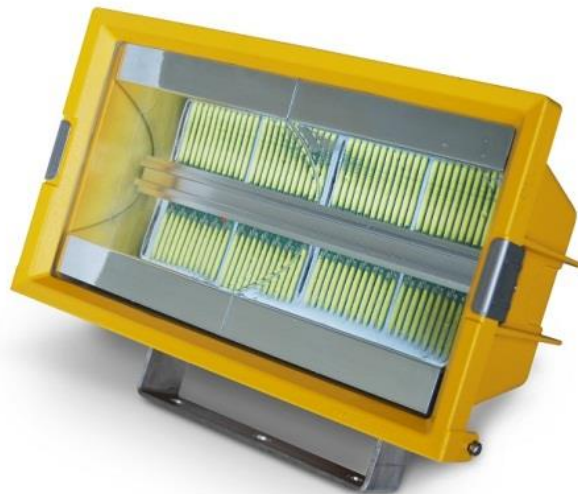
Descriptions

The WL-100 is a ICAO & FAA compliant Type A / B High intensity obstruction light which is used for day-time, twilight & night-time, marking Towers (Telecom, GSM), Smokestacks, Buildings and any other potentially hazardous obstructions to air traffic with a flashing white safety light.

The enclosure is made of die casting aluminum with powder coated finish, light weight, waterproof, shockproof and corrosion resistant. It has a self-contained wiring compartment which helps make the product easy to install and terminate as no additional junction boxes are required.

The light source consists of high powered long life LED technology with a UV stabilized polycarbonate lens and reflector-housing which also minimizes light pollution.

The ICAO & FAA standards state that a high intensity aircraft warning light must operate 24hours. The light intensity must be: during the day-time: 200,000cds, twilight: 20,000cds and night-time: 2,000cds.



❖ **Above:** The "WL-100" White Flashing High Intensity Aircraft Warning Light

Main functions and features

- Modular design and meets optics standard, compact size and high efficiency
- Based on LED technology
- Extremely Reliable - Major Maintenance Cost Saving
- Resistant to Shock and Vibrations
- Lamp housing –Polycarbonate, with good anti-impact strength, thermal stability, high transmittance
- Self-contained wiring compartment - eliminates additional boxes
- Base material--Die casting aluminum LM6 alloy
- Tempered glass lens
- Reflector - ABS
- Combustibility rating : UL94-V0
- IP protection : IP65
- Operating temperature: -30°C - +70°C, can withstand the most severe environments
- Flashing LED type
- Typical LED lifetime: ≥100, 000 hrs
- **Optional:** GPS synchronization between 2 or more Delta lights (please ask Delta sales/technical for further information)

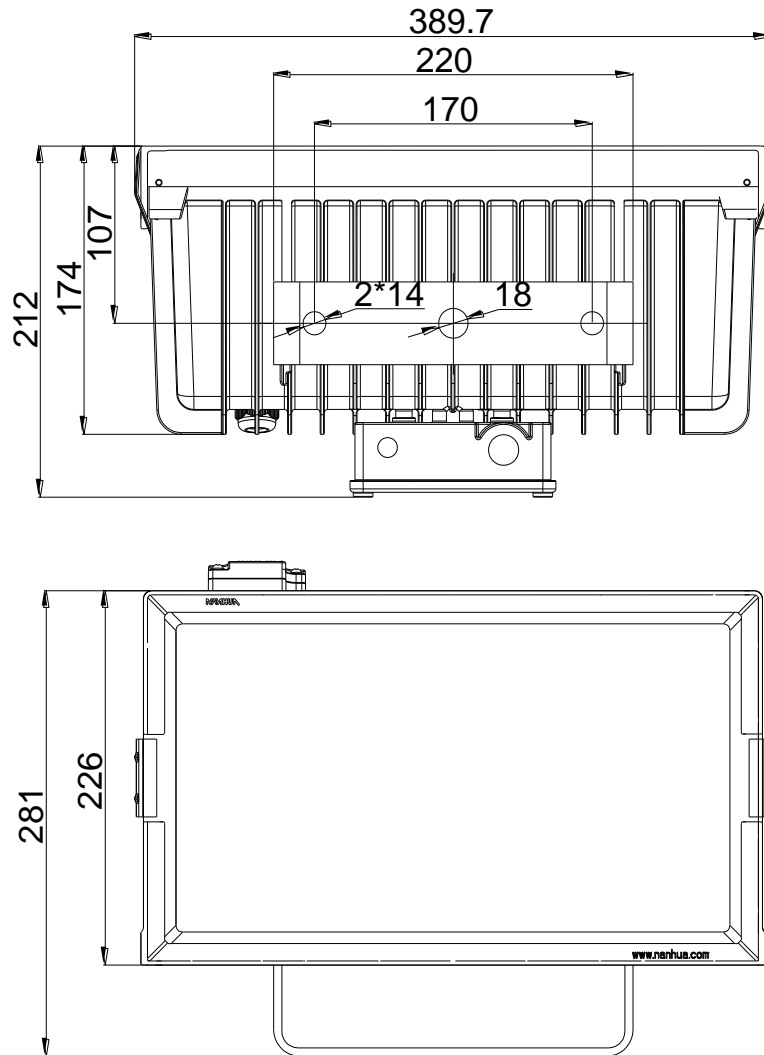
Specifications

- Compliant to ICAO Standard (Annex 14) Type A & B depending on model and FAA standard L856 & L857
- Operating voltage: AC200V-240V
- Power consumption: 60W at day mode
20W at twilight mode
10W at night mode
- Intensity: $\geq 210,000\text{cd}$
 $20,000\text{cd} \pm 25\%$
 $2,000\text{cd} \pm 25\%$ (Preset to ICAO / FAA standards, can be adjusted at time of production upon client request)
- Horizontal degree: 120°
- Vertical degree: $3^\circ - 7^\circ\text{mm}$
- Aviation white color
- LED life: $>100,000$ hrs
- Flashing rate: 40fpm or 60fpm (Preset to ICAO / FAA standards Type A or B, can be adjusted at time of production upon client request)
- IP Protection: IP65
- Weight: 10Kg (approx)
- Dimension : 390mm(L) ; 252mm(W) ; 226mm(H)

LED advantages compare with strobe light

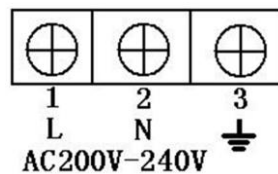
- Compared to a strobe light source, LED's have longer life-time, approx 100,000hrs.
- Strobe light requires ten thousand voltage driver which is very high and a dangerous voltage and must isolate and discharge all power before carrying out any works in. The LED uses a low voltage driver, which is much safer to work with.
- LED has high luminous efficiency and reduced energy consumption.

Installation



Wiring

- Secure the light on a smooth surface which has enough strength (if there is no mounting surface, Delta can customize special mounting bracket as per request).
- When installing, please keep away from any nearby light source, at the same time, ensure the photocell (if one installed) will not be covered by the light unit and/or light beam.
- Make sure the power supply can match the rated power of light before connecting.
- Insert the power cable from the gland box and then connect them to the corresponding terminals inside the lamp body (please see below illustration).



- Open the nameplate cover; connect power cable and earth wire to corresponding terminals through waterproof gland.
- Check whether the power cables are connected correctly before power on.
- Re-place the nameplate cover and fasten with screw.

... Please Note...

- Temperature rise inside the control box is normal phenomenon
- Please do not open any components inside by yourself
- This product is a sealed structure and should not be tampered with by anyone other than registered installer.

**Please use this product strictly in accordance with the
instructions above**

Delta Obstruction Lighting Ltd.
Delta House
Wrigley Street
Oldham
OL4 1SL
U.K
Tel:0044 (0) 161 7854940
Fax:0044 (0) 161 7854941